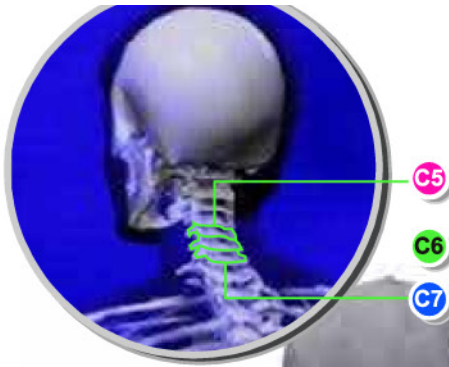


Cervical Radiculopathy



C6 level damage

C7 level damage



C5 level damage



Overview

The spinal cord branches out to all parts of the body. The part of a nerve that connects to the spinal cord is called a nerve root. If one of these roots is injured or pinched - pain, weakness, numbness or tingling may be felt in the part of the body served by that nerve.

Symptoms

The nerve roots leaving the neck area serve the arms. When a cervical root is injured, pain, weakness, numbness or tingling may be felt in the shoulder, arm.

Herniated Disc

When a spinal disc ruptures, it may press on a nerve root.



Spinal Stenosis

The bones creating the spinal canal may grow inward, pinching a nerve root.



Degenerative Disc Disease

If a spinal disc weakens, vertebral bones above and below may touch, pinching nearby nerve roots. Bony spurs also may press on the nerves.

